

Supplies Required: 1 liter Sterile isotonic solution (i.e. heparinized saline or lactated ringers), 3 sterile basins, 2 luer-lock syringes and sterile scissors

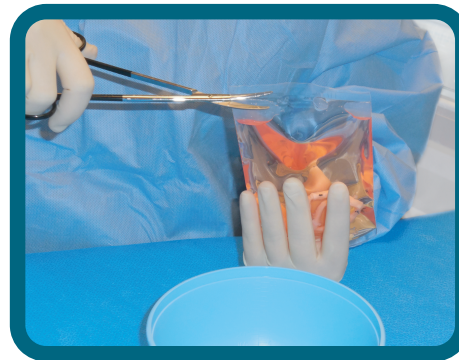
Non-Sterile Field

- 1) Tissue is packaged in a triple barrier system, with the outer pouch being non-sterile.
- 2) At the completion of STEP B, the packaging shall be wiped dry prior to opening.
- 3) Non-sterile Surgical Tech shall peel back outer pouch and present secondary pouch to sterile surgical tech.



Sterile Field

- 4) Surgical Tech shall then peel back secondary pouch and remove inner pouch.
- 5) The inner pouch is not a peel pouch and requires scissors to open. Cut at square end of inner pouch as shown.



- 6) Pour contents of inner pouch into a sterile basin.
- 7) Prepare 2 basins approx. 500ml of isotonic solution (i.e. Heparinized lactated ringers).
- 8) Remove tissue from cryopreservation solution and place into 1st basin containing isotonic solution.

- 9) Attach luer-lock syringe to cannula on tissue and flush solution through tissue for a total of 120cc of flushing.



- 10) Remove tissue and place into 2nd basin containing isotonic solution and flush tissue again for another 120cc of flushing.
- 11) Tissue is ready for implant.
- 12) If tissue is delayed for implant for more than 30 minutes, tissue and basin shall be covered and placed on ice bath until ready for use.